

second floor

HERITAGE ROOM

The Heritage Room has a permanent dance floor and marble bar.

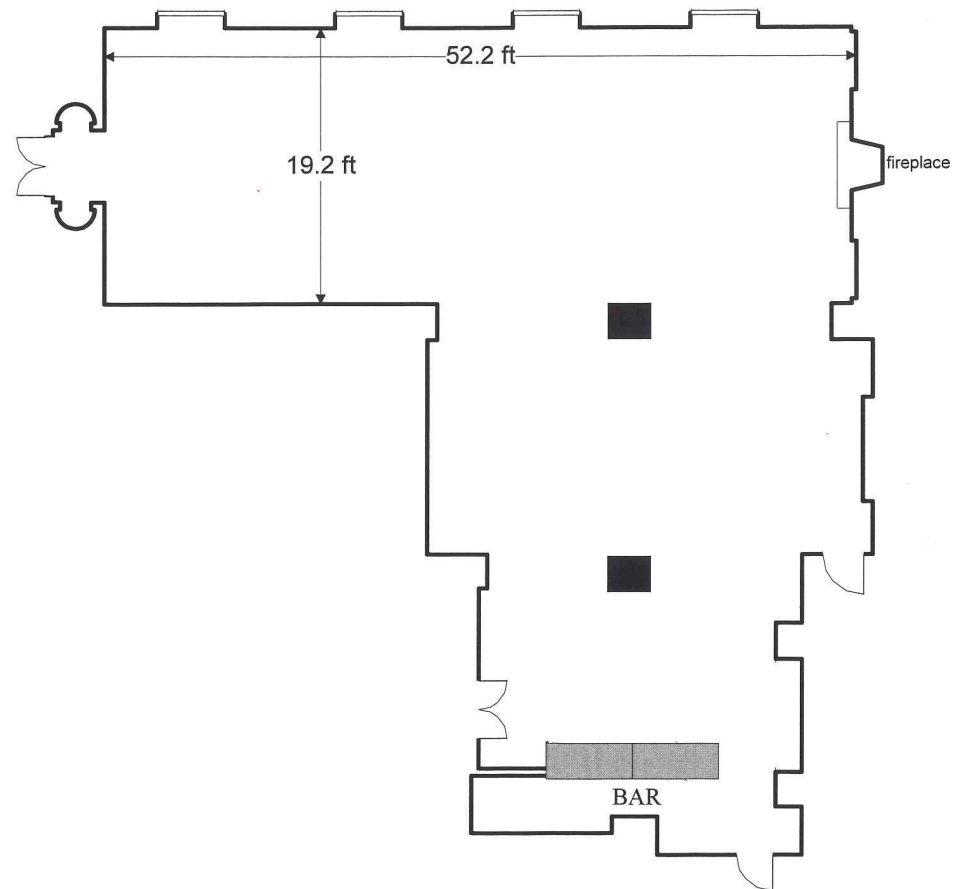
- 1,400 SQ. FT.
- 42 CONFERENCE
- 96 THEATER STYLE
- 46 U-SHAPE
- 60 CLASSROOM
- 72 ROUND TABLES
- 100 RECEPTION



second floor

HERITAGE ROOM

floor plan



second floor

PRESIDENTS HALL

*Our Presidents Hall is the ideal setting for large, festive receptions.
Its expansive walls serve as a gallery for some of the Club's most exquisite art.*

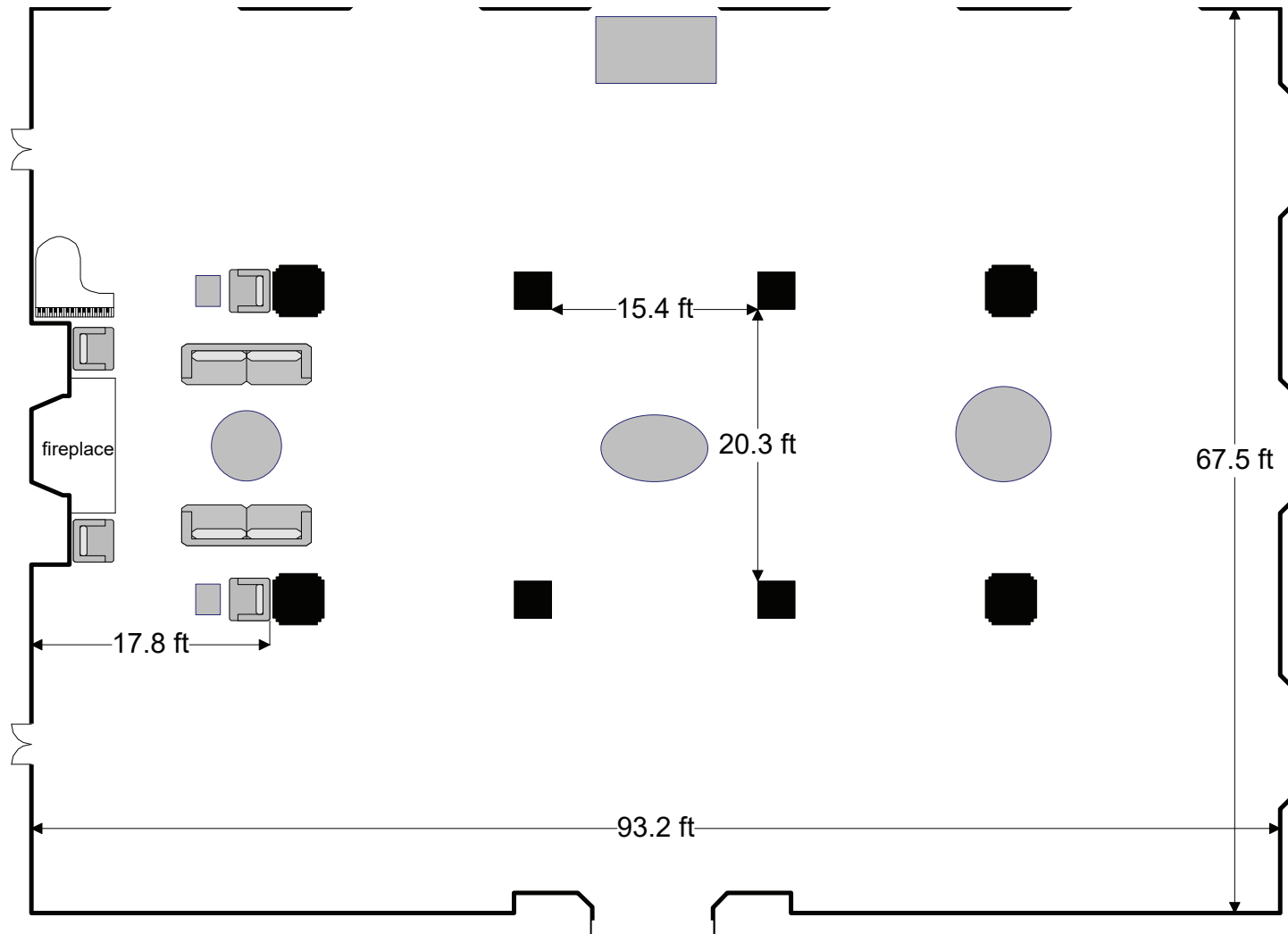
- 6,092 SQ. FT.
- 260 THEATER STYLE
- 170 CLASSROOM STYLE
- 400 ROUND TABLES
- 400 RECEPTION



second floor

PRESIDENTS HALL

floor plan



fourth floor
LIBRARY

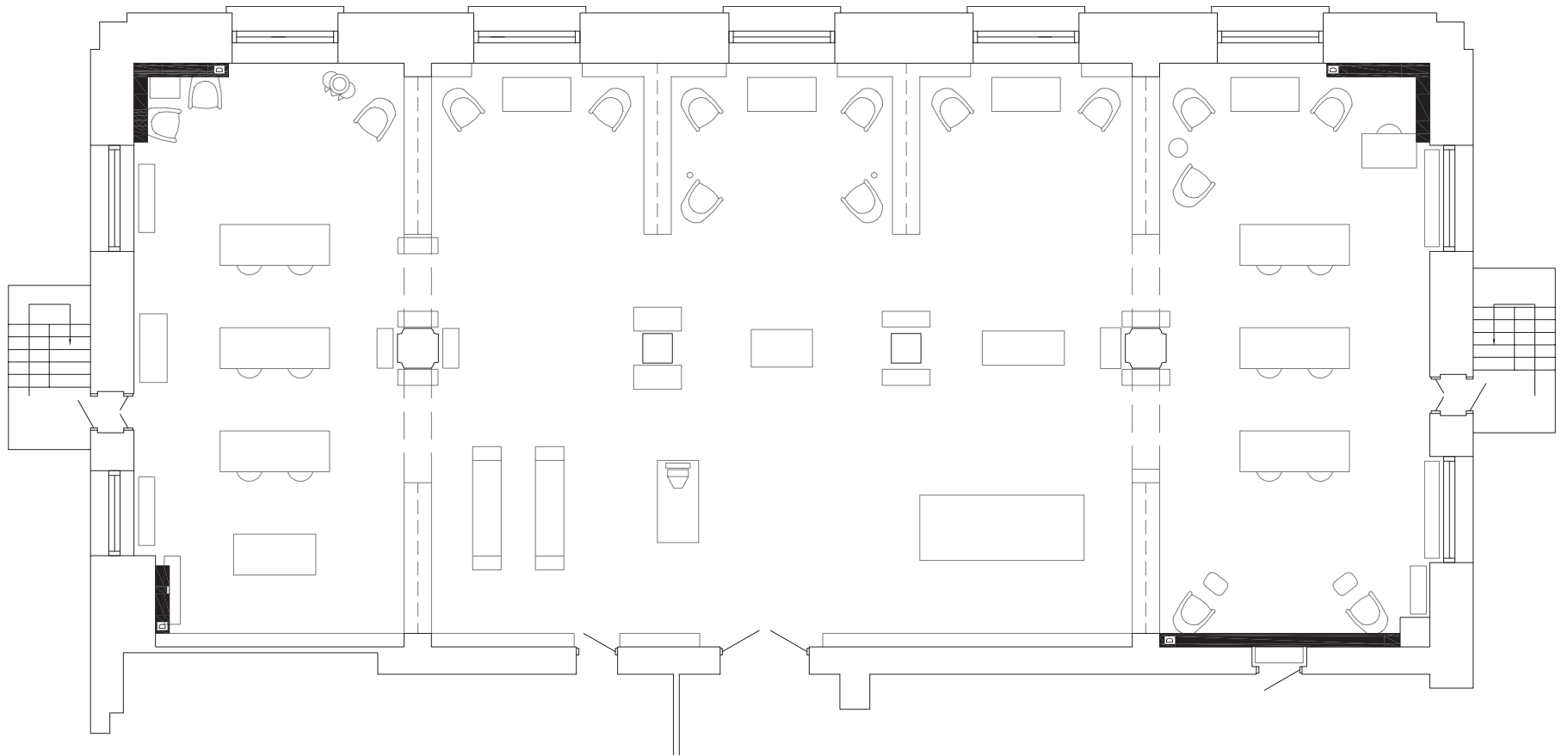
The Library is the perfect location where fun and sophistication meet. Ideal for cocktail receptions.

- 2,700 SQ. FT.
- 50 THEATER STYLE
- 60 ROUND TABLES
- 150 RECEPTION



fourth floor
LIBRARY

floor plan



fifth floor

CRYSTAL ROOM

The Crystal Room is bright and airy; often used for intimate wedding receptions or medium-sized meetings.

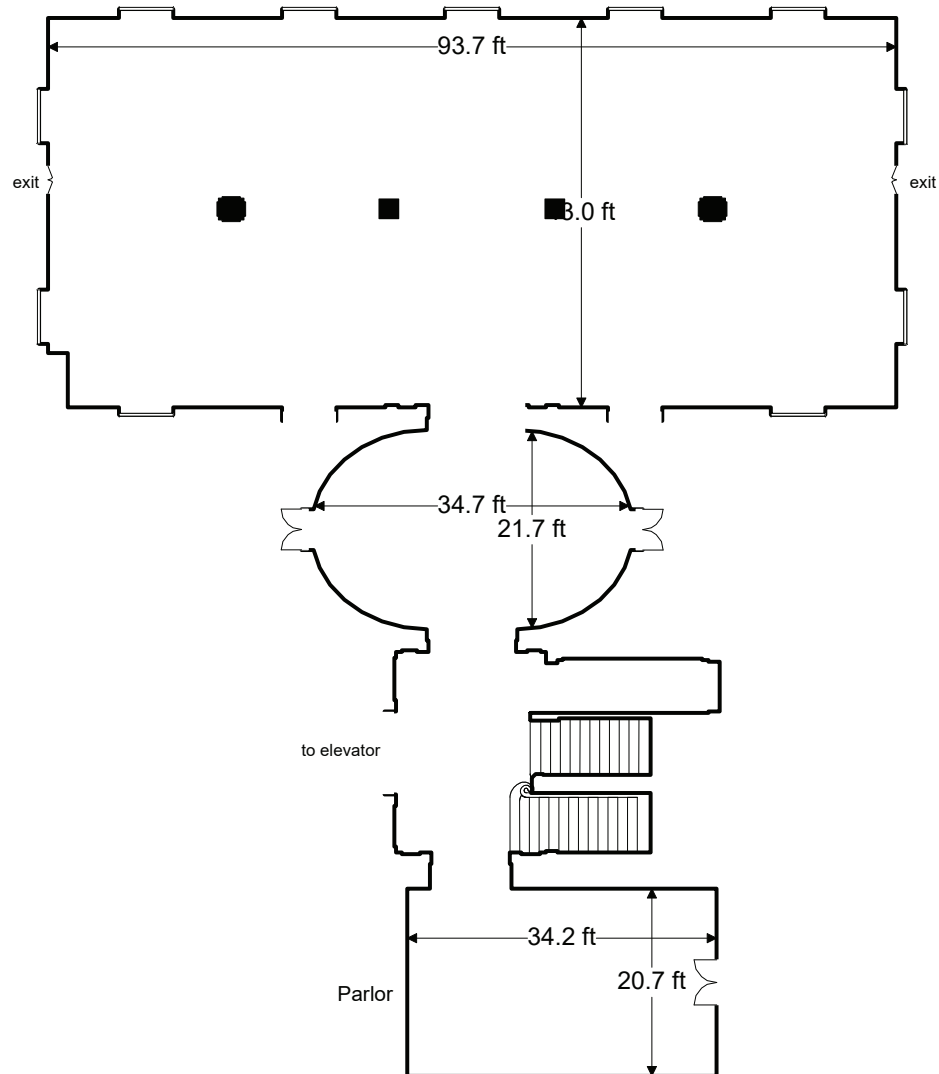
- 4,000 SQ. FT.
- 250 THEATER STYLE
- 150 CLASSROOM STYLE
- 220 ROUND TABLES
- 300 RECEPTION



fifth floor

CRYSTAL ROOM

floor plan



fifth floor

BOARD ROOM

Our Board Room provides the ideal space for holding an executive conference or breakout session.

• 697 SQ.FT. • 24 BOARD ROOM STYLE
SPACE FLEXIBLE BASED ON CORPORATE REQUIREMENTS

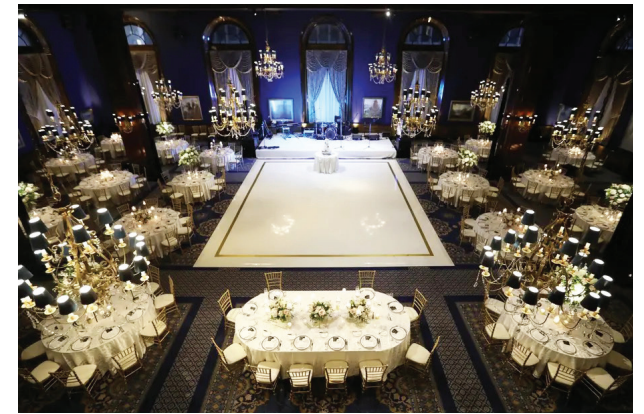


sixth floor

LINCOLN BALLROOM

The elegant Lincoln Ballroom, with its 28-foot ceilings, fanlight windows, hand-stenciled ceiling beams and 12 opulent crystal chandeliers is the room of choice for many formal affairs.

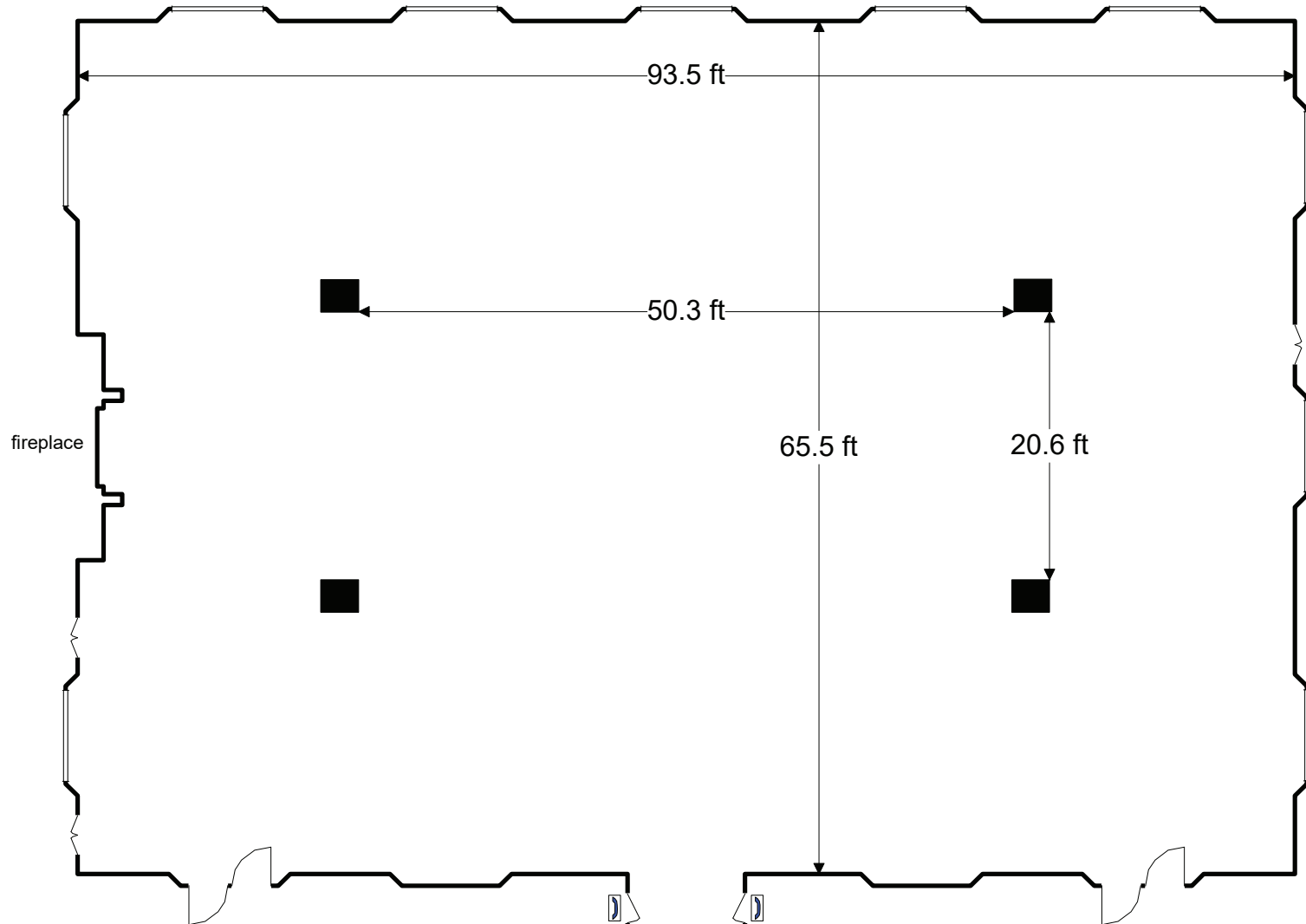
• 6,092 SQ. FT. • 28 FT. CEILING • 440 THEATER STYLE • 420 ROUND TABLE • 500 RECEPTION



sixth floor

LINCOLN BALLROOM

floor plan



seventh floor

FRENCH & TUDOR ROOMS

The French Room and Tudor Room, located on the seventh floor, are two unique rooms for any occasion.

French Room (Room 710)

- 1,380 SQ. FT.
- 54 CONFERENCE
- 148 THEATRE
- 54 U-SHAPE
- 76 CLASSROOM
- 80 ROUND TABLES
- 125 RECEPTION

Tudor Room (Room 700)

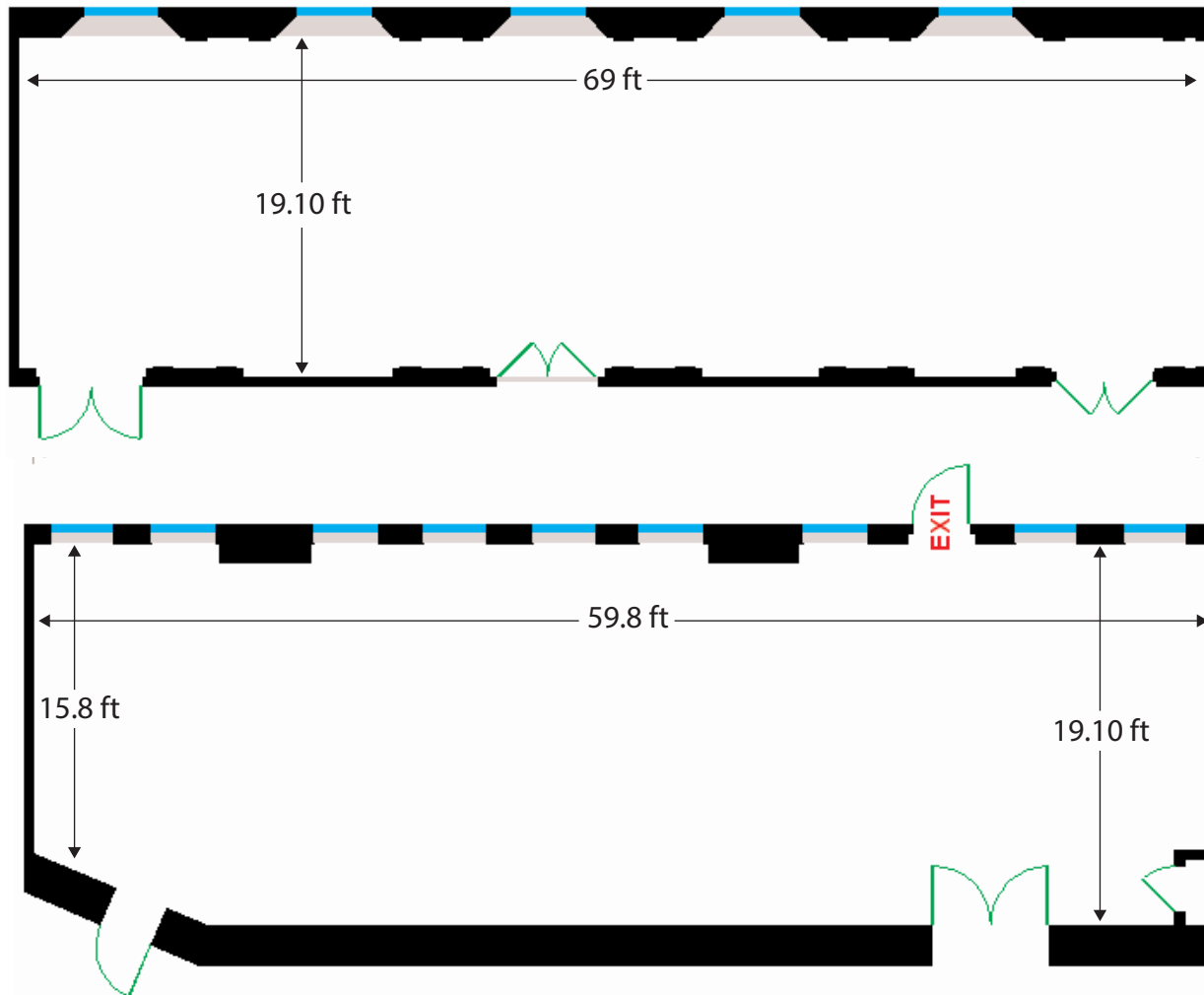
- 1,140 SQ. FT.
- 48 CONFERENCE
- 130 THEATRE
- 44 U-SHAPE
- 54 CLASSROOM
- 64 ROUND TABLES
- 100 RECEPTION



seventh floor

FRENCH & TUDOR ROOMS

floor plan



eighth floor

MEETING ROOMS

Our meeting rooms provide the ideal space for holding an executive conference or breakout sessions.

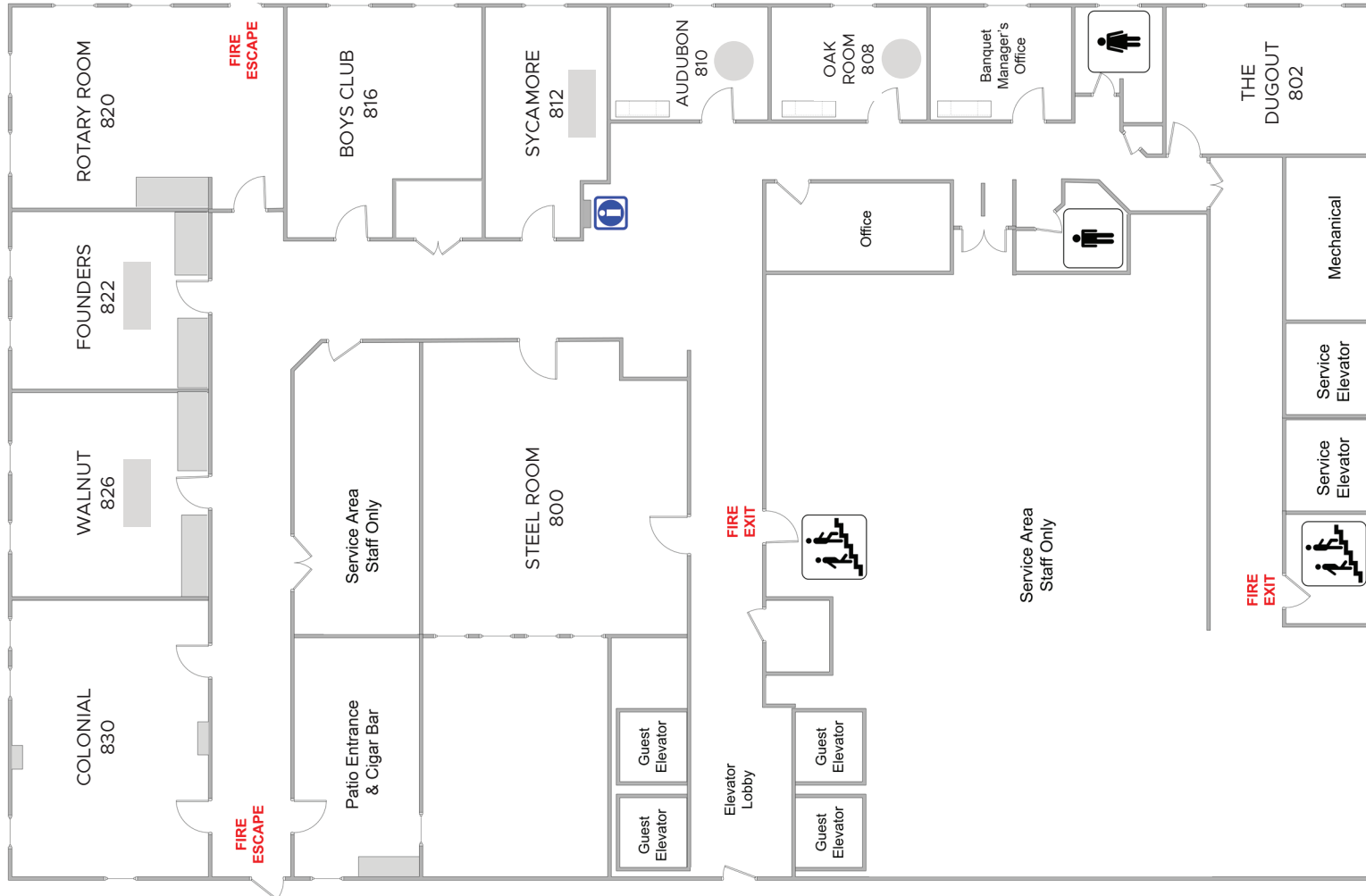
VARIOUS ROOMS AVAILABLE THAT CAN SEAT UP TO 30 CONFERENCE STYLE AND 50 RECEPTION



eighth floor

MEETING ROOMS

floor plan



floors ten-seventeen

GUEST ROOMS

With more guest rooms than most private clubs in the United States, the Union League Club is proud to offer the ambiance, security and extraordinary service paired with 160 well-appointed guest accommodations, including 21 suites, of a classic, luxury hotel. Our guest rooms and suites, located on floors 10 through 17 of the Clubhouse, are the embodiment of elegance and sophistication and are marked by a contemporary and classic design.



ROOM	DESCRIPTION
QUEEN	ONE QUEEN BED
DOUBLE QUEEN	TWO QUEEN BEDS, ONE ADA COMPLIANT ROOM AVAILABLE
KING	ONE KING BED, SOME ADA COMPLIANT
DOUBLE QUEEN DELUXE	TWO QUEEN BEDS WITH A SITTING AREA THAT INCLUDES A SOFA BED
KING DELUXE	ONE KING BEDROOM WITH A SITTING AREA THAT INCLUDES A SOFA BED
EXECUTIVE SUITE	ONE KING BEDROOM WITH SEPARATE LIVING ROOM, INCLUDING SOFA BED AND ONE FULL BATHROOM
LINCOLN SUITE	ONE KING BEDROOM WITH SEPARATE LIVING ROOM, INCLUDING SOFA BED AND TWO FULL BATHROOMS
ILLINOIS SUITE	ONE OR TWO BEDROOMS ONE KING AND/OR ONE DOUBLE QUEEN BEDROOM WITH A SEPARATE LIVING ROOM, INCLUDING A SOFA BED, AND UP TO THREE FULL BATHROOMS
VIP SUITE	ONE, TWO OR THREE BEDROOMS TWO KING BEDROOMS AND ONE DOUBLE QUEEN BEDROOM, LIVING ROOM WITH A SOFA BED, DINING ROOM, WET BAR, UP TO FOUR FULL BATHROOMS
CHICAGO SUITE	ONE OR TWO BEDROOMS TWO KING BEDROOMS, LIVING ROOM WITH A SOFA BED, DINING ROOM, WET BAR, THREE FULL BATHROOMS, WHIRLPOOL BATHTUB
PRESIDENTIAL SUITE	ONE OR TWO BEDROOMS ONE KING AND QUEEN BEDROOM, MARBLE FOYER, LIVING AND DINING ROOM, FIREPLACE, WET BAR, TWO AND A HALF BATHROOMS, WHIRLPOOL BATHTUB AND A BUTLER KITCHEN

GUEST ROOM AMENITIES

- SEALY PLUS MATTRESSES WITH FEATHER BEDS AND DOWN DUVETS/PILLOWS
- SPA-INSPIRED CARRARA MARBLE BATHROOMS
- MAKE-UP/SHAVING MIRRORS AND HAIR DRYERS IN EACH BATHROOM
- LAUNDRY/DRY-CLEANING SERVICE
- COMPLIMENTARY HIGH-SPEED WIRELESS INTERNET ACCESS
- COFFEE MAKER FEATURING COMPLIMENTARY TEA & ITALIAN LAVAZZA COFFEE
- 310-THREADCOUNT SHEETS
- LUXURY TOILETRIES
- THICK TERRY BATHROBES
- MULTI-LINE TELEPHONES WITH PERSONALIZED VOICE MAIL
- ROLL-A-WAYS, CRIBS, PACK 'N PLAYS, MICROWAVES AND MINI FRIDGES BY REQUEST
- SIX FLOORS DEVOTED TO STATE-OF-THE-ART HEALTH & FITNESS CENTER
- ACCESS TO BUSINESS CENTER WITH FIVE PRIVATE OFFICES, GOURMET DINING

ROOM	CONFERENCE	THEATER	U-SHAPE	CLASSROOM	ROUND TABLES	RECEPTION	DIMENSIONS	SQ. FT.
PRESIDENTS HALL	72	260	72	170	360 LIMITED W/AV or 400 W/O	400	93 x 65.5 x 28	6,092
LINCOLN BALLROOM	76	440	76	180	380 LIMITED W/AV or 420 W/O	500	93 x 65.5 x 28	6,092
CRYSTAL ROOM	72	250	72	150	220	300	93 x 43 x 15	4,000
LIBRARY	N/A	50	N/A	N/A	60	150	90 x 30	2,700
HERITAGE ROOM	42	96	46	60	72	100	35 x 15	1,400
FRENCH ROOM #710	54	148	54	76	80	125	69 x 20	1,380
TUDOR ROOM #700	48	130	44	54	64	100	60 x 19	1,140
COLONIAL #830	34	64	32	42	40	50	38 x 21	798
ULC BOARD ROOM	24	N/A	N/A	N/A	N/A	N/A	41 x 17	697
5TH FLOOR PARLOR	26	64	28	36	54	50	29 x 22	638
STEEL ROOM #800	22	64	24	36	32	40	29 x 22	638
ROTARY ROOM #820	26	48	24	27	32	30	29 x 20	580
THE DUGOUT #802	24	50	22	30	32	25	26 x 20	520
BOYS CLUB #816	17	N/A	N/A	N/A	N/A	N/A	26 x 18	473
FOUNDERS #822	10	N/A	N/A	N/A	N/A	N/A	21 x 17.5	368
WALNUT #826	10	N/A	N/A	N/A	N/A	N/A	21 x 16	336
SYCAMORE #812	10	N/A	N/A	N/A	N/A	N/A	25 x 11.5	288
OAK ROOM #808	N/A	N/A	N/A	N/A	8	N/A	14 x 11.5	161
AUDUBON #810	N/A	N/A	N/A	N/A	8	N/A	14 x 11.5	161
A LA CARTE OUTLETS MARBLE ROOM	20	40	17	18	24	30	29 x 20	580
EAST ROOM	12	36	15	18	12	20	26 x 18	468